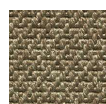


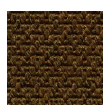
396300



396100



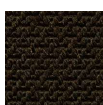
396150



396240



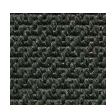
396250



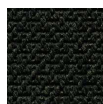
396280



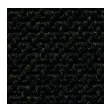
396300



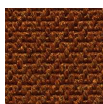
396350



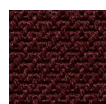
396380



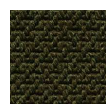
396390



396480



396680



396740

396000













Quattro

– nature's beautiful asymmetry




With its breathtaking asymmetrical pattern, Quattro demonstrates the possibility of creating complex designs with artisanal precision in weaving. The pattern on the flat-woven carpet encapsulates the beauty of the plant kingdom as it unfolds in rough leaf structures on everything from beans to potato plants in the kitchen garden, creating an expression that is both robust and soft at the same time due to the high weave structure.

Available in 12 classic colours. Special colours from +200 m². Felt backing from +200 m².

Technical data

	Standard	 Broadloom w/Textile	 Broadloom w/Felt	 Tiles
Type of manufacture	ISO 2424	Woven	Woven	
Structure	ISO 2424	Loop pile	Loop pile	
Pile material	ISO 2424	100% PA66	100% PA66	
Dye method		Continuous dyed	Continuous dyed	
Primary backing	ISO 2424	PP/PET	PP/PET	
Secondary backing	ISO 2424	rPET Textile	rPET Felt	
 Dimensions/Width	ISO 3018	Approx. 400 cm	Approx. 400 cm	
Surface pile thickness	ISO 1766	Approx. 4.00 mm	Approx. 4.00 mm	
 Total thickness	ISO 1765	Approx. 5.00 mm	Approx. 6.00 mm	
Total pile mass	ISO 2424	Approx. 800 g/m ²	Approx. 800 g/m ²	
 Total mass	ISO 8543	Approx. 2,450 g/m ²	Approx. 2,800 g/m ²	
Stitch rate	ISO 1763	Approx. 144,000 /m ²	Approx. 144,000 /m ²	
 Antistatic	ISO 6356	≤ 2 kV	≤ 2 kV	
 Classification for use	EN 1307	23 Domestic - Intensive use	23 Domestic - Intensive use	
 Classification for use	EN 1307	33 Commercial - Heavy use	33 Commercial - Heavy use	
 Luxury rating class	EN 1307	LC1	LC1	
 Castor chair suitability	EN 985	Intensive use	Intensive use	
 Stair suitability	EN 1963	Intensive use	Intensive use	
 Impact sound reduction	ISO 10140	Approx. ΔL _w 16 dB	Approx. ΔL _w 21 dB	
 Sound absorption	EN ISO 354	Approx. 0.15 α _w	Approx. 0.20 α _w	
 Thermal resistance	ISO 8302	Approx. 0.06 m ² K/W	Approx. 0.09 m ² K/W	
 Fireclass	EN 13501-1	C _{fl} - s1	C _{fl} - s1	

Certifications

	Standard	 Broadloom w/Textile	 Broadloom w/Felt	 Tiles
CE	EN 14041	0809-CPR-19006044-C3	0809-CPR-19006044-C3	
DOP	EN 14041	1118#19006044-C3	1118#19006044-C3	
IACG	EN 16516	Compliant	Compliant	
M1		Compliant	Compliant	
GUI		Compliant	Compliant	
GUT		Compliant	Compliant	
EPD - GWP A1-A3	ISO 14025 EN 15804+A2	11.9 kg CO ₂ - Eq	11.9 kg CO ₂ - Eq	
PEF - LCA Scope 3 CO ₂ - Eq according to EU PEF Standard		15.0 kg CO ₂ - Eq	15.6 kg CO ₂ - Eq	
Reach		Compliant	Compliant	
BREEAM NOR		Compliant	Compliant	
Recycled content		100% recycled backing	100% recycled backing	



As we continuously improve our products and testing procedures, any above declaration is subject to amendments without prior notice.
For the latest technical specifications, installation and maintenance guide visit:

www.fletcocarpets.com