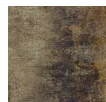




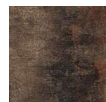
DARK GREY - T800 - 101501721324



GAMMA: 800103750



800101100



800101250

ALPHA



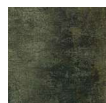
800101300



800101350



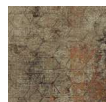
800101390



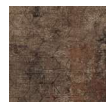
800101750



800101800



800102100



800102250

BETA



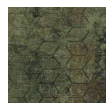
800102300



800102350



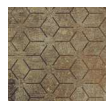
800102390



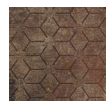
800102750



800102800



800103100



800103250

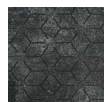
GAMMA



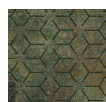
800103300



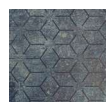
800103350



800103390



800103750



800103800

T800100000














## Apis

– patterned beehives and biodiversity

A remarkable modular carpet collection, created in collaboration with the international design brand Yo<sup>2</sup>, named after the Latin word for bees. In the design development, we were inspired by the significance of bees for our nature and biodiversity, and the beautiful geometric pattern of the Apis collection takes its unmistakable inspiration from the honeycomb where the bees store their sweet honey.

Available in three beautiful designs, four sizes, and seven organic colours.

### Technical data

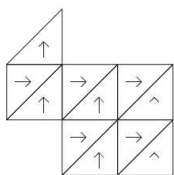
	Standard	<input type="checkbox"/> Tiles
Type of manufacture	ISO 2424	Woven
Structure	ISO 2424	Loop pile
Pile material	ISO 2424	100% PET Anvire FR®
Dye method		Print
Primary backing	ISO 2424	PET
Secondary backing	ISO 2424	TEXTiles®
 Dimensions/Width	ISO 3018	By order
Surface pile thickness		Approx. 2.20 mm
 Total thickness		Approx. 5.00 mm
Total pile mass	ISO 2424	Approx. 575 g/m <sup>2</sup>
 Total mass	ISO 8543	Approx. 3,300 g/m <sup>2</sup>
Stitch rate	ISO 1763	Approx. 164,000/m <sup>2</sup>
 Antistatic	ISO 6356	≤ 2 kV
 Classification for use	EN 1307	23 Domestic - Intensive use
 Classification for use	EN 1307	33 Commercial - Heavy
 Luxury rating class	EN 1307	LC1
 Dimensional stability	EN 986	≤ 0.2 %
 Castor chair suitability	EN 985	Intensive use
 Impact sound reduction	ISO 10140	Approx. ΔL <sub>w</sub> 20 dB
 Sound absorption	EN ISO 354	Approx. 0.20 a <sub>w</sub>
 Thermal resistance	ISO 8302	Approx. 0.10 m <sup>2</sup> K/W
 Fireclass	EN 9239-1 EN 13501-1	B <sub>fl</sub> - s1

### Certifications

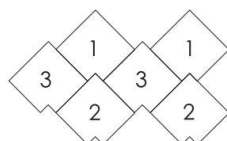
	Standard	☐ Tiles
CE	EN 14041	0809-CPR-19006044-C8
DOP	EN 14041	1118#19006044-C8
IACG	EN 16516	Compliant
M1		Compliant
BVB (Byggsvaru Bedömningen)		Accepted
BREEAM NOR		Compliant
REACH Regulation	EC 1907/2006	Compliant
POPS Regulation	EC 2019/1021	Compliant
EPD (GWP-total A1-A3)	ISO 14025 EN 15804	11.2 kg CO <sub>2</sub> eq/m <sup>2</sup>
EPD RSL (Reference Service Life)	ISO 14025 EN 15804	25 years
Recyceller Innhalt		100% recycled backing



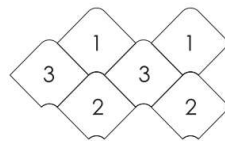
### Recommended tile installation



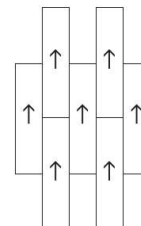
SW 914  
50x50 cm (diagonal)



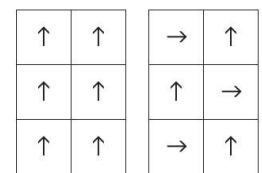
SW 909  
50x50 cm



SW 904  
50x50 cm



25x100 cm  
50x100 cm



50x50 cm  
100x100 cm

As we continuously improve our products and testing procedures, any above declaration is subject to amendments without prior notice.  
For the latest technical specifications, installation and maintenance guide visit:

[www.fletcocarpets.com](http://www.fletcocarpets.com)